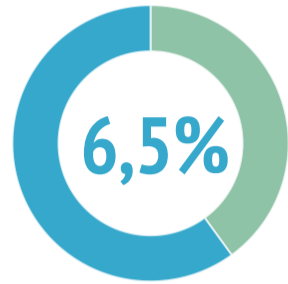


LOW VISION IN FRANCE

Low vision involves a significant reduction in a person's vision that doesn't improve by wearing glasses, contact lenses, or with medical treatments.

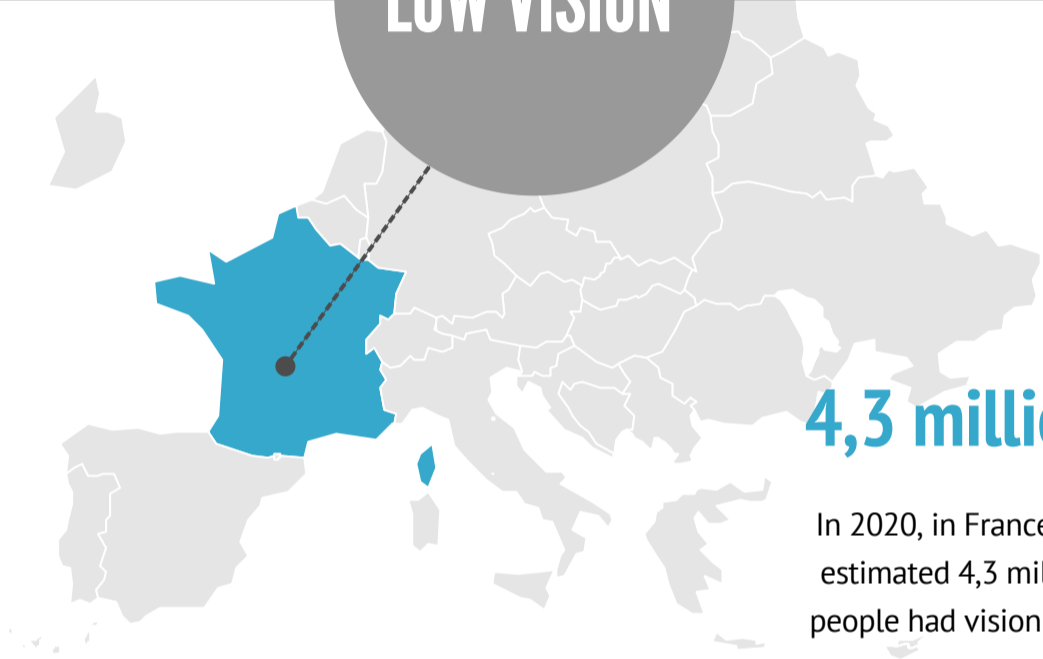
170.000

In France, around 170.000 **children** are visually impaired, of which 2000 are blind.



Of France's population has vision loss.

LOW VISION

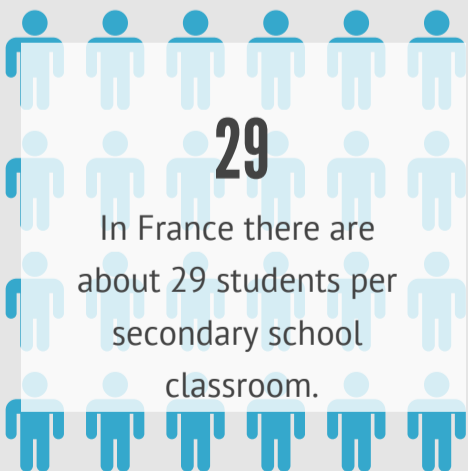


4,3 million

In 2020, in France, an estimated 4,3 million people had vision loss.

SECONDARY EDUCATION IN FRANCE

In France, the educational system is organized in 3 stages: primary school (école), secondary school, (collège), and high-school (lycée). Secondary education is from age 12 to 16, and it is taught at "collèges" (11 to 14 years old) and at "lycées" (15 to 18 years old).



5,7 million

In 2021, there were 5,7 million students in secondary school.

REFERENCES

<https://www.iapb.org/learn/vision-atlas/magnitude-and-projections/countries/france/>
<https://www.statista.com/statistics/1200871/vision-impairments-by-severity-in-france/>
<https://cherchonspourvoir.org/en/the-current-situation/#:~:text=In%20France%2C%20we%20estimate%20that,are%20blind%2C%20including%20%2C000%20children>
<https://www.exteriores.gob.es/Consulados/marsella/es/ViajarA/Paginas/Educaci%C3%B3n.aspx>
Statista Research Department